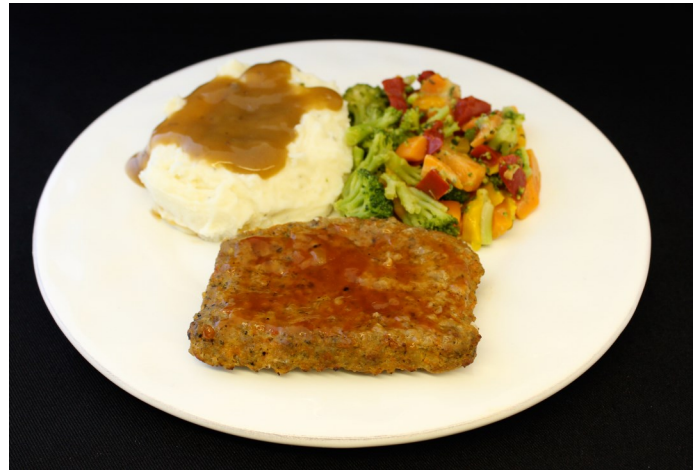




CN FC Meatloaf Slices

Code:	3726
Case Pack:	26 lbs./2.6 oz.
Net Weight:	26 lbs.
Storage:	Frozen
Servings per Case:	160



Serving Suggestions:

The suggested serving size is 1 slice

Preparation Instructions:

Convection Bake for 12-14 Minutes at 375 degrees F.

Conventional Oven Bake for 15-18 Minutes at 375 degrees F.

Ingredients: Ground beef (not more than 20% fat), water, textured vegetable protein (soy flour, caramel color), breadcrumbs (enriched flour [wheat flour, niacin, reduced iron, thiamine mononitrate, riboflavin, folic acid], corn syrup, sugar, vegetable shortening [one or more of the following: hydrogenated soy bean oil, cotton seed oil], yeast, contains 2% or less of the following: salt, soy flour, whey sodium stearoyl 2 lactylate (dough conditioner), calcium propionate, sesame seeds), ketchup (tomato concentrate, distilled vinegar, high fructose corn syrup, corn syrup, salt, spice, onion powder, natural flavoring), whole tomatoes, dehydrated onion, salt, eggs, garlic powder, parsley flakes.

Nutrition Facts

Serving Size: 1 Slice (74g)

Serving Per Container: Approx. 160

Amount Per Serving

Calories 120	Calories from Fat 60
% Daily Value*	
Total Fat 7g	11%
Saturated Fat 3g	15%
Trans Fat 0g	
Cholesterol 30mg	10%
Sodium 240mg	10%
Total Carbohydrate 5g	2%
Dietary Fiber 1g	4%
Sugars 1g	
Protein 12g	
Vitamin A 0%	Vitamin C 0%
Calcium 2%	Iron 8%

* Percent Daily Values are based on a 2,000 calorie diet.

Child Nutritional Information:

Each serving provides 2.00 oz. of M/MA

Allergens: Egg, Milk, Soy, Wheat